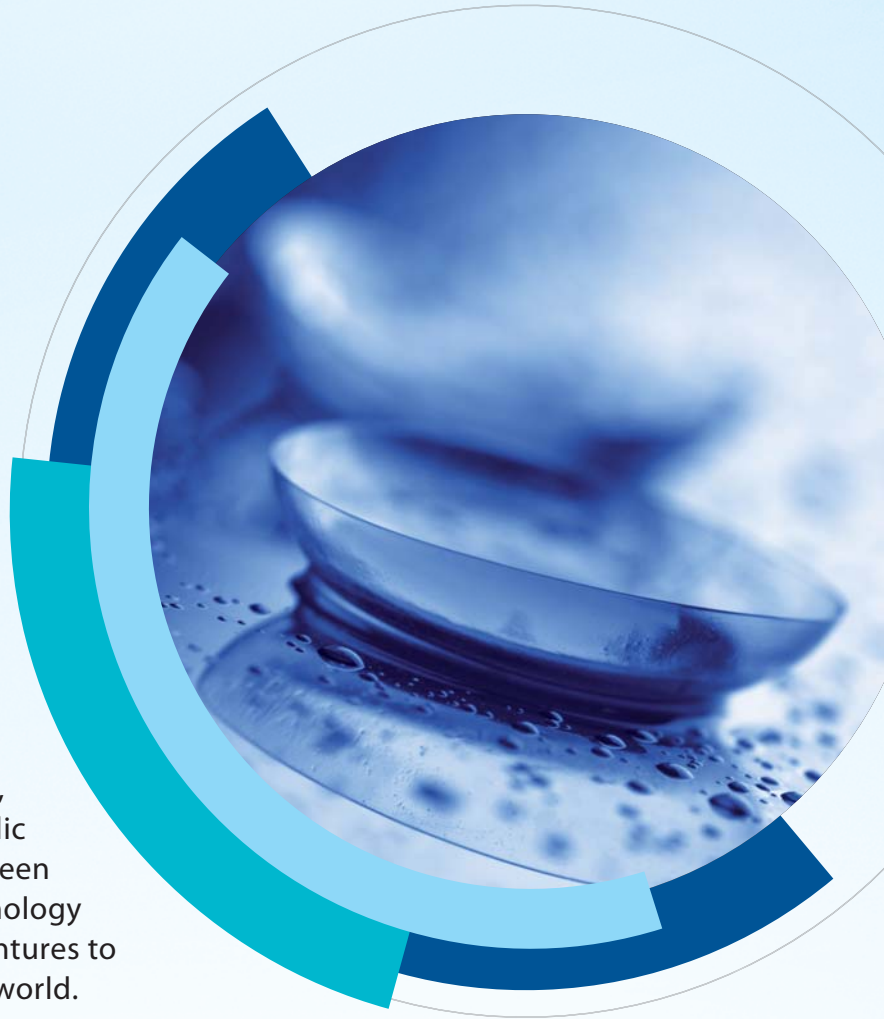


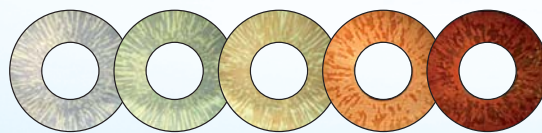


## Expert in Contact Lens and IOL Technologies

The WILENS Ltd. company was started by Professor Otto Wichterle, the inventor of soft contact lenses in 1991. Production method used is a highly productive Spin Casting developed by Professor Wichterle as well. Spin Casting technology produces contact lenses with perfect surface and edges. Recently, we introduced spincasting of hydrophilic soft intra-ocular lenses. We have also been working on projects with other technology driven companies in joint co-operation ventures to help develop their businesses around the world.



We own the ISO 13485 certificate.





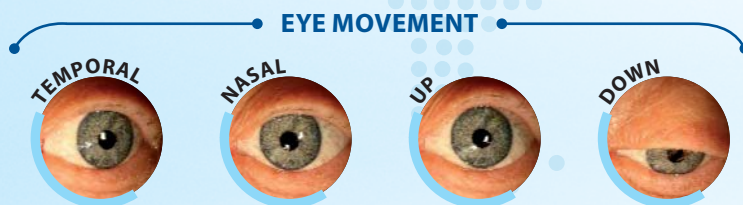
# Tinting System

Wilens has developed systems for the tinting and colouring of finished soft contact lenses. Different inks for CL tinting and opaquing are available. Tinting system is suitable for creating cosmetic, prosthetic or transparently tinted lenses. Ink are miscible so you can get any color and hue you desire. We also provide a lot of iris masks with different sizes and designs. We are even able to manufacture a custom-made iris mask according to your draft. Tinting inks are based on FDA approved dyes and also another in-house leachability tests were performed.



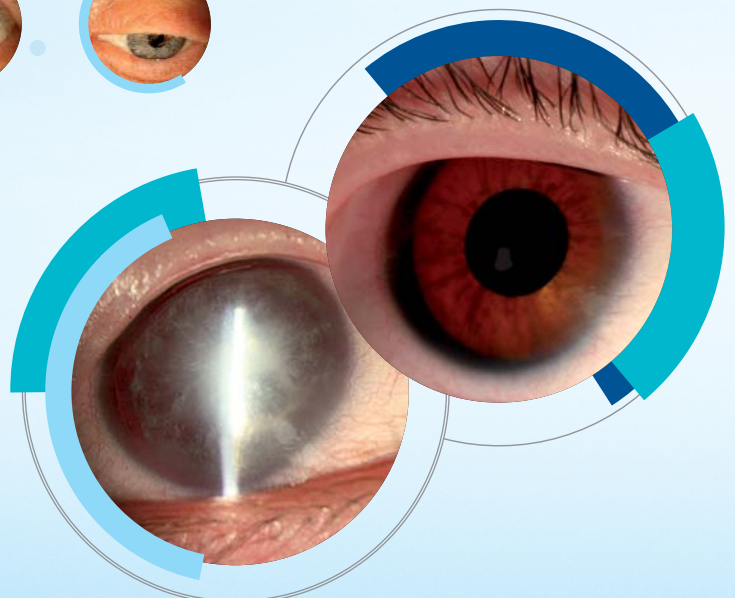
# Hydrogel Orbital Implants

Recently, we developed a unique hydrogel orbital implant. It is used after eyeball enucleation. Hydrogel is a proven biomimetic material that has been used for intraocular lenses for many years. Hydrogel surpasses other materials (hydroxyapatite, PE, silicone, natural coral) in lower weight and excellent biocompatibility that reduces implant rejection. Implant design with openings enables to sew on eye muscles easily. Orbital implant is manufactured as a custom made medical device.

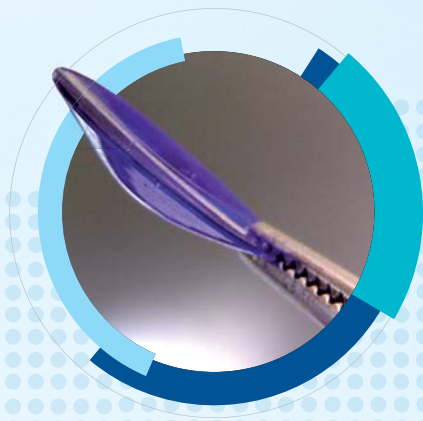


# Hydrogel Iris Implants

Hydrogel iris implant is a soft non-translucent membrane which is used for replacing damaged or missing iris. It is intended for implantation into the lens capsule. Iris implant material is a biomimetic hydrogel the same as for intraocular lenses. Artificial iris is manufactured as a custom made medical device.







## IOI Technology

Wilens has developed and patented a unique spincasting technology for the manufacture of intraocular lenses. At present, we produce IOLs on a contract basis as an OEM. We offer contract manufacture for another partners. Our clean rooms are of a class C-ISO 7 with a floor size 66 m2 manufacturing capacity in our clean rooms with skilled staff.

## Private Label Contact Lenses Hioxifilcon Contact Lenses

We supply private label monthly and daily lenses. Lenses are produced by Aquilus Ltd. Singapore. Lenses are supplied either blisterpacked or as dry blanks in casting moulds.



## Methafilcon Lenses

Our company manufactures monthly and special lenses.  
**D55 Monthly lenses**

## Bandage lenses

are used to support eye healing process after injury or eye-surgery. We manufacture bandage lenses for both humans and pets.



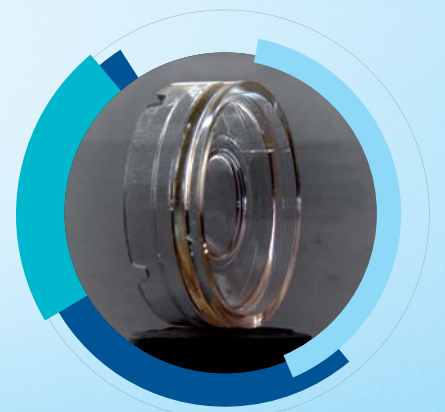
## Research in Polymer Materials

Wilens has a long experience in research and development of new polymers for contact and intraocular lenses and biomimetic polymers. With one Ph.D. and one Dr chemists Wilens has achieved many goals in polymer research:

- + thermo-, UV- and VIS- light initiated polymerizations
- + hydrophobic and hydrophilic materials for CL and IOL
- + UV-blocking and Blue Ray-cut systems
- + biodegradable polyurethanes for implants
- + hydrogel wound cover

## Spin cast production know-how

From the very beginning, we at Wilens s.r.o. have been continuously improving our Spin-casting technology using our years of technically developed know-how of the process. Now we are providing advisory and consulting services for casting polymerization and other parts of lens technology.

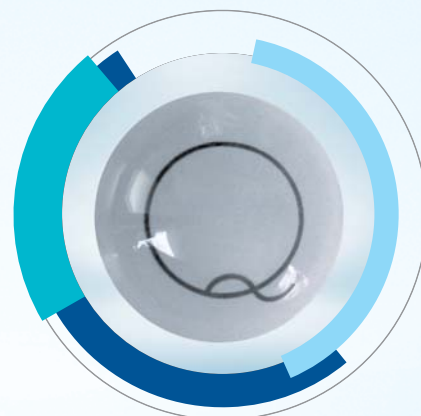




	Daily lenses (30 pcs)	Monthly lenses (6 pcs)
Lens material	Hioxifilcon A	Hioxifilcon A
Water content	57 %	57 %
Base Curve	8,70 mm	8,60 mm
Diameter	14,20 mm	14,20 mm
Power range	-0.50D to -6.00D (0.25D steps) +0.50D to +4.00D (0.25D steps)	-6.50D to -10.00D (0.50D steps) +4.50D to +6.00D (0.50 steps)
	-0.50D to -6.00D (0.25D steps) +0.50D to +4.00D (0.25D steps)	-6.50D to -10.00D (0.50D steps) +4.50D to +6.00D (0.50 steps)
CT	0,09 mm at -3,00 D	0,09 mm at -3,00 D

	D55 I (6 pcs)	D55 II (6 pcs)
Lens material	Methafilcon A	Methafilcon A
Water content	55 %	55%
Base Curve	8,45 mm	8,90 mm
Diameter	14,10 mm	14,1 mm
Power range	-0,50 D to -5,00D (0.25D steps) -0,50 D to -5,00 D (0,25D steps)	-5,50 D to -16,00D (0.50D steps) -5,50 D to -10,00 D (0,50D steps)
CT	0,09 mm at -3,00 D	0,09 mm at -3,00 D

	Bandage lenses for humans (6 pcs)
Lens material	Methafilcon A
Water content	55 %
Base Curve	9,10 mm
Diameter	15,50 mm
Power range	+0,00 D (plan)
CT	0,13 mm



	Bandage lenses for pets (1 pc)							
Lens material	Methafilcon A							
Water content / Power	55 % / 0,0 D (plan)							
	Z2	Z1	Z4	Z3	Z5	Z6	Z8	Z7
Base Curve	10,9	10,5	10,4	9,9	9,1	8,4	7,7	7,4
Diameter	19,2	18,3	17,2	16,4	15,5	14,1	12,9	12,4
CT	0,40	0,40	0,25	0,30	0,26	0,15	0,10	0,10



Expert in Contact Lens  
and IOL Technologies



Wilens, spol. s r.o.  
Tyršova 45, 339 01 Klatovy  
Czech Republic



Tel.: +420 376 317 484  
Fax: +420 316 317 498  
Skype: wilensKT



info@wilens.cz  
wilensKT@gmail.com  
www.wilens.cz